

Crossing borders

Diagon[®] Reagents for SYSMEX[®] Haematology Analyzers

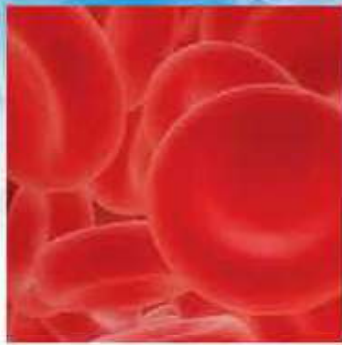
Sysmex [®] K-800 / K-1000 / E-4000 / K-4500 / E-5000			Diagon Control/Calibrator
h23101	Diaton-SYS-Diluent	20 L	D-Check D Plus (only for K-4500) D-Check 18 Plus (only for K-800-/ K-1000 / K-4500)
h23202	Diasheath-SYS	20 L	
h23105	Dialyser-SYS-SHB	5 L	
h23125	Dialyser-SYS-SHB	0,5 L	
h23205	Diastromlyser-SYS-3WP	5 L	
h23225	Diastromlyser-SYS-3WP	0,5 L	
h23103	Diaresh-SYS	5 L	
h23126	Diaclean-SYS	0,1 L	

Sysmex [®] SF-3000			Diagon Control/Calibrator
h23101	Diaton-SYS-Diluent	20 L	D-Check 5Diff
h23105	Dialyser-SYS-SHB	5 L	
h23301	Diastromlyser-SYS-FD I	5 L	
h23302	Diastromlyser-SYS-FD II	0,5 L	
h23303	Diastromlyser-SYS-FBA	5 L	
h23126	Diaclean-SYS	0,1 L	

Sysmex [®] XT-1800i / XT-2000i / XT-4000i			Diagon Control/Calibrator
h23101	Diaton-SYS Diluent	20 L	D-Check 5Diff D-Check 5Diff Plus (5diff +ret+NR) D-Check XE D-Check XE Ret (only for reticulocytes) D-Check XE nRBC (only for nRBC) / D-Cal NEK (not for XT-1800)
h23601	Diastromlyser-SYS-4DL	5 L	
h23602	Diastromlyser-SYS-4DS-Dye	0,042 L	
h23616	Diaretic-II-SYS Kit*	1 L + 0,012 L	
	*Diaret-II-SYS-Buffer (PN 23606)	separately n/a	
	*Diaret-II-SYS-Dye (PN 23607)	separately n/a	
h23303	Diastromlyser-SYS-FBA	5 L	
h23105	DialyserSYS-SHB	5 L	
h23126	Diaclean-SYS	0,1 L	

*Only for XT-2000i and XT-4000i

Sysmex [®] XS-800i / XS-1000i			Diagon Control/Calibrator
h23101	Diaton-SYS Diluent	20 L	D-Check 5Diff D-CheckXE / D-Cal NEK
h23601	Diastromlyser-SYS-4DL	5 L	
h23602	Diastromlyser-SYS-4DS-Dye	0,042 L	
h23105	Dialyser-SYS-SHB	5 L	
h23126	Diaclean-SYS	0,1 L	



Sysmex® KX-21

Diagon
Control/Calibrator

h23101	Diaton-SYS Diluent	20 L	D-Check D Plus / D-Cal Plus, D-Cal NEK
h23401	Diastromlyser-SYS-WH	0,5 L	
h23126	Diaclean-SYS	0,1 L	

Sysmex® XE 2100

Diagon
Control/Calibrator

h23101	Diaton-SYS Diluent	20 L	D-Check 5Diff D-Check 5Diff Plus D-Check XE D-Check XE Ret (only for reticulocytes) D-Check XE nRBC (only for nRBC) / D-Cal NEK
h23601	Diastromlyser-SYS-4DL	5 L	
h23602	Diastromlyser-SYS-4DS-Dye	0,042 L	
h23613	Diastromlyser-SYS-NR Kit	1 L + 0,012 L	
	Diastromlyser-SYS-NR	separately n/a	
	Diastromlyser-SYS-NR-Dye	separately n/a	
h23605	Diastromlyser-SYS-IM	5 L	
h23616	Diaret-Search-II-SYS Kit	1 L + 0,012 L	
	Diaret-Search-II-SYS-Buffer	separately n/a	
	Diaret-Search-II-SYS-Dye	separately n/a	
h23202	Diasheath-SYS	20 L	
h23303	Diastromlyser-SYS-FBA	5 L	
h23105	DialyserSYS-SHB	5 L	
h23126	Diaclean-SYS	0,1 L	

All trademarks or registered trademarks are the property of their respective owners